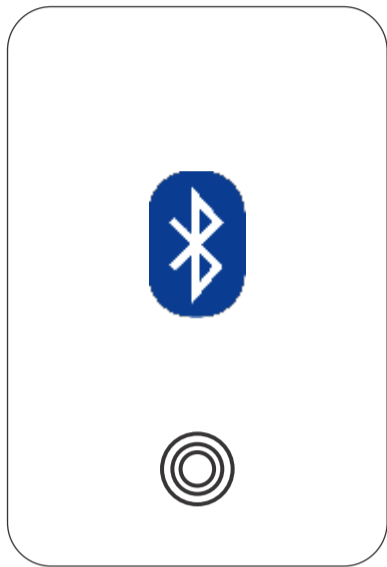


服务器机架门锁系统

Sever Rack Door Lock System



Allow to open lock when Bluetooth card in range
當藍牙卡在有效範圍內時，允許開鎖

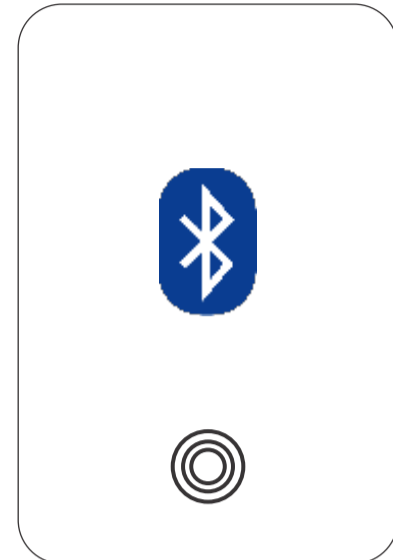
壁挂式/小型设备架
Wall mount / Small size
Equipment rack
1x ESP32 chip
1x SMA lock



全高服务器机架
Full height server rack
1x ESP32 chip
2x SMA lock for front door
2x SMA lock for rear door



Single rack controller 单机架控制器



Bluetooth card in range & press button,
open cabinet lock

蓝牙卡在有效范围内并按下按钮，
即可打开柜锁

* WiFi required

* 需要WiFi

壁挂式/小型设备架
Wall mount / Small size
Equipment rack
1x ESP32 chip
1x SMA lock

cardlist.txt - Notepad

```
File Edit Format View Help
YFD8KG1D0PVCCMXND8M812WZ
3WHHRQIIREMA04RULHY41C4U
76W8Q09ROLR9FTNBIJ7RU943
ZQ72660FENZGM1GAJRZAJCMF
2QUTXMIHU3K06ITADMIIEIXR
0092773
4700324
6629706
1198772
1031495
```



MCU build in ftp server for card lis

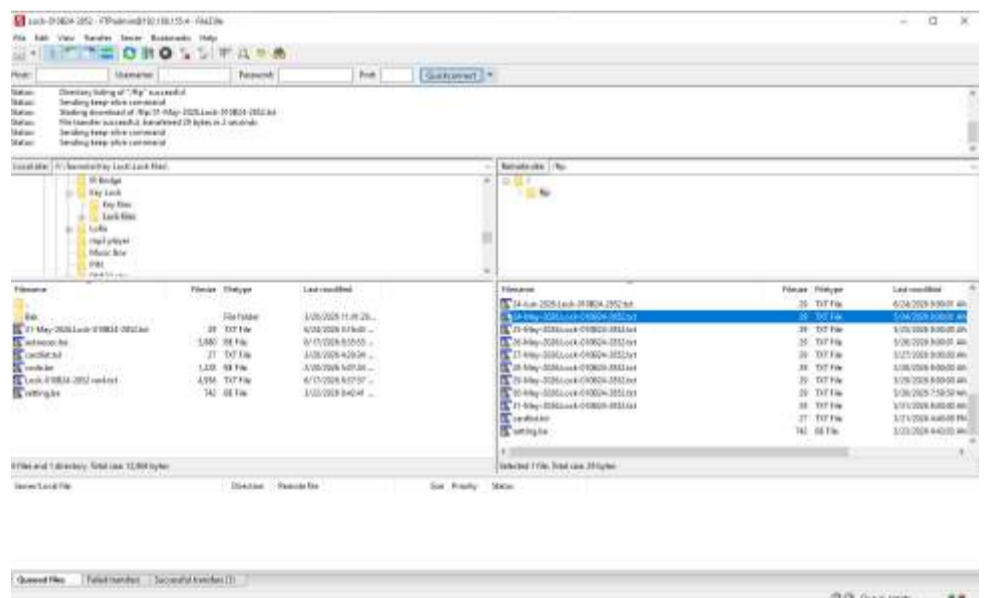
MCU内置FTP服务器，用于存储卡列表

Bluetooth card list store in MCU,
No server required.

蓝牙卡列表存储在MCU中，无需服务器。

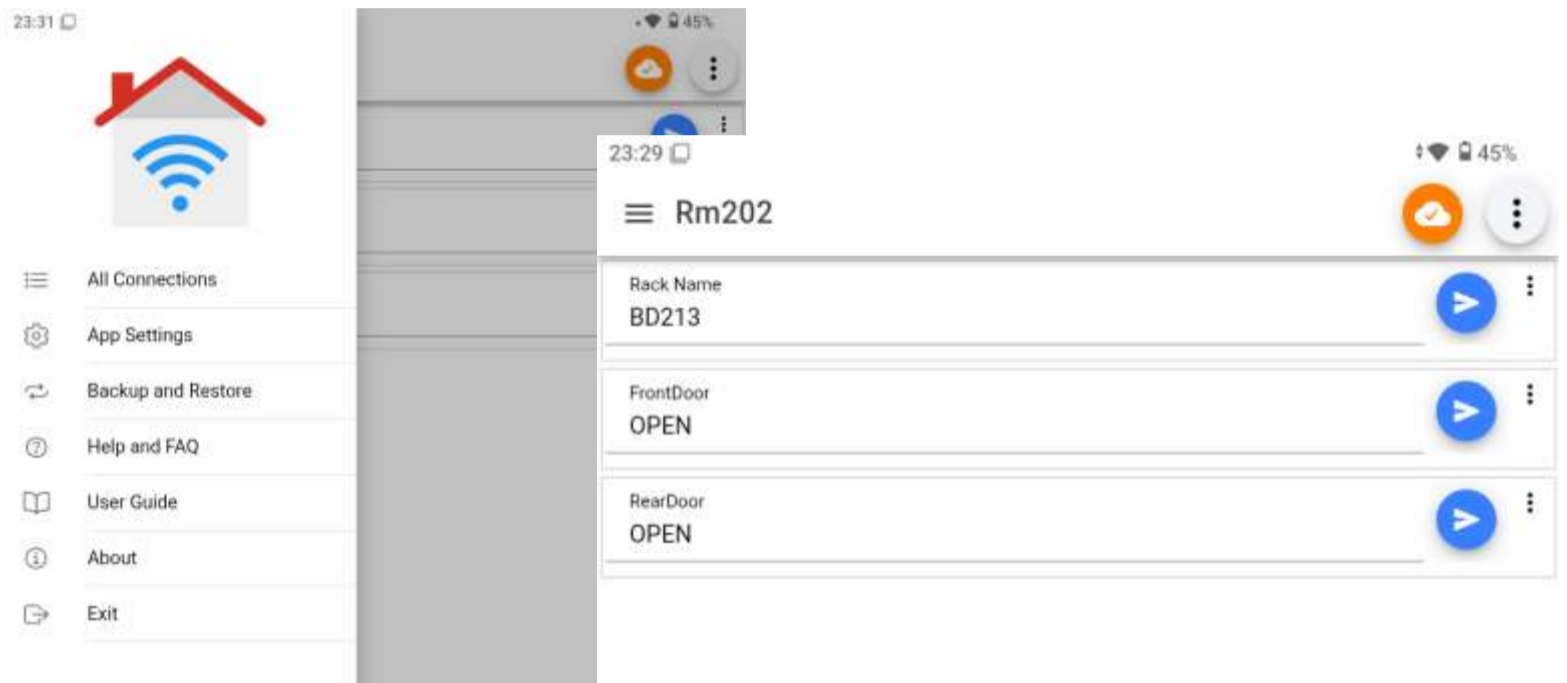
Email notice when door open (option)

门打开时发送电子邮件通知（可选）



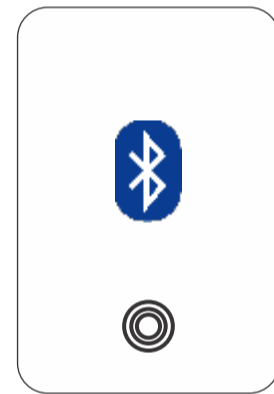
Data Centre rack controller 数据中心机架控制器

MQTT APP
control door lock
MQTT APP
控制门锁



全高服务器机架
Full height server rack

1x ESP32 chip
2x SMA lock for front door
2x SMA lock for rear door



Allow to open lock when Bluetooth card in range
當藍牙卡在有效範圍內時，允許開鎖

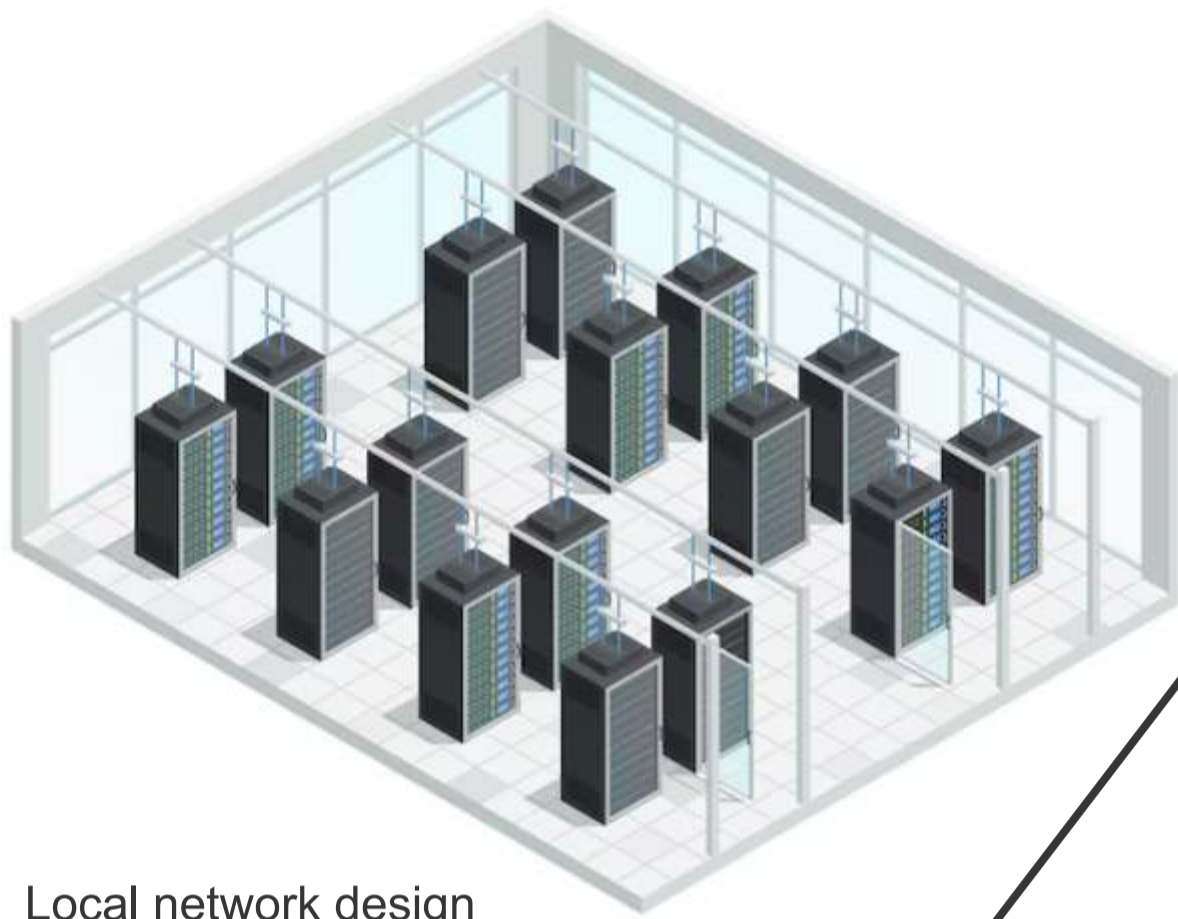


Server Rack MCU 伺服器機架MCU

MCU build in ftp server for special card list
MCU內置FTP服务器，用于特殊卡列表
Bluetooth card list store in MCU,
No server required.
蓝牙卡列表存储在MCU中，无需服务器。
Email notice when door open (option)
门打开时发送电子邮件通知（可选）
* WiFi required
* 需要WiFi



Data Centre deployment 数据中心部署



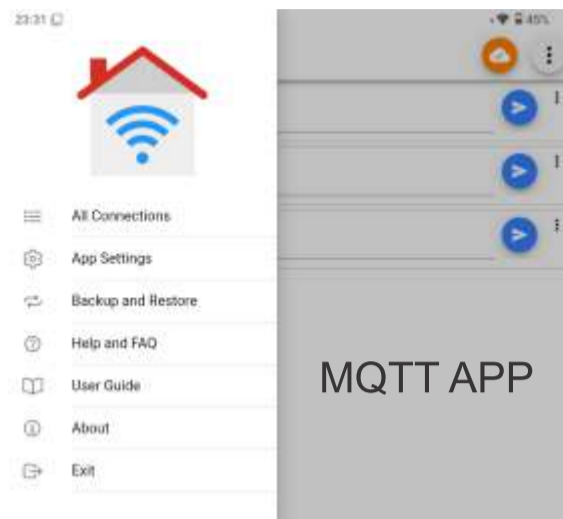
Local network design
no internet require
局域网设计
无需互联网连接

Router inside data hall
数据中心内的路由器



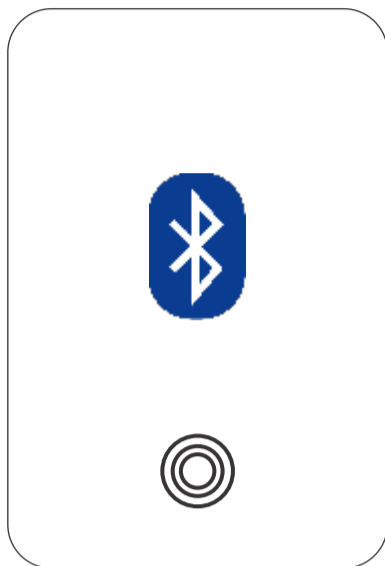
company network to
email server

公司网络到电子邮件服务器



Data Centre security

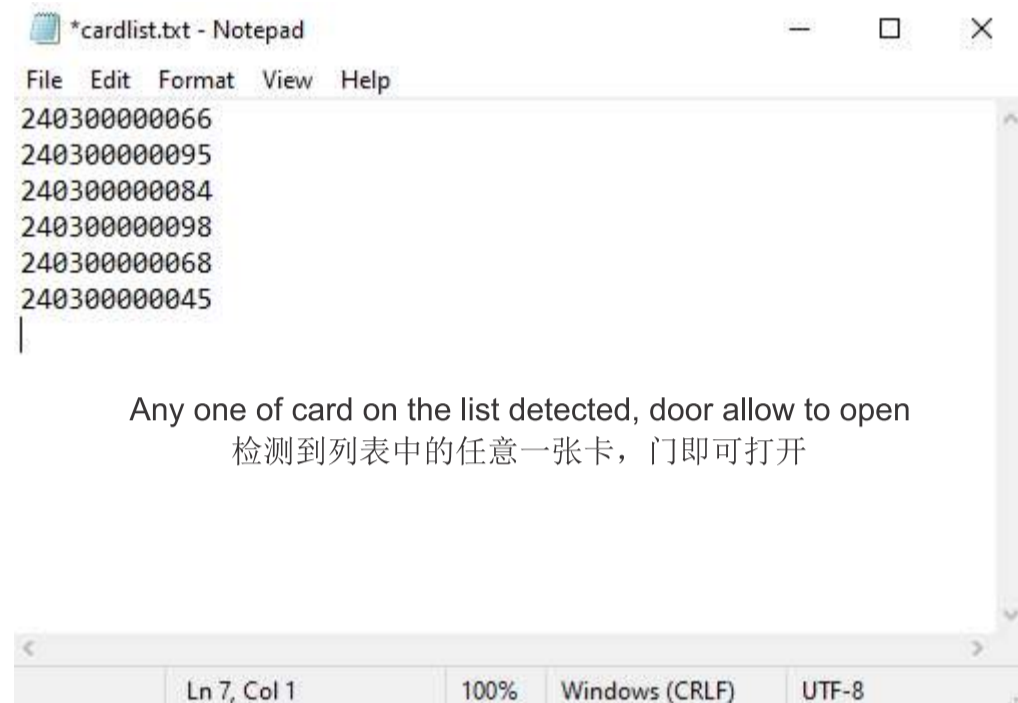
数据中心安全



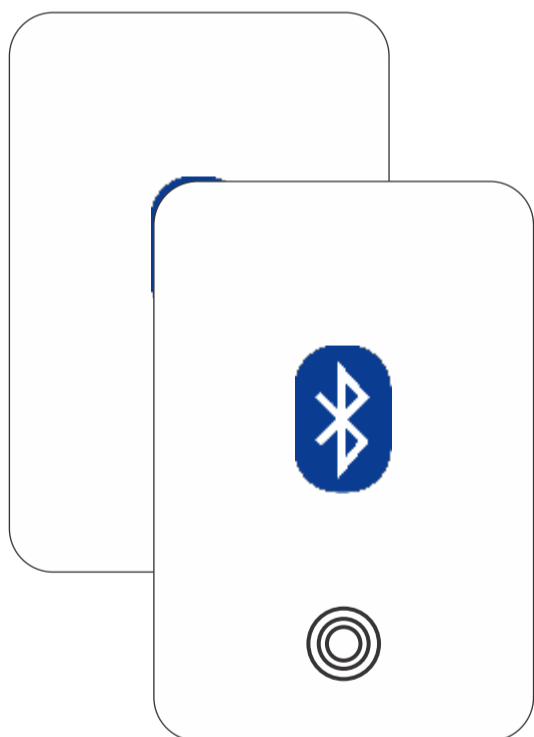
Operation officer wear Bluetooth card
行动人员佩戴蓝牙卡

Standard Level

标准水平



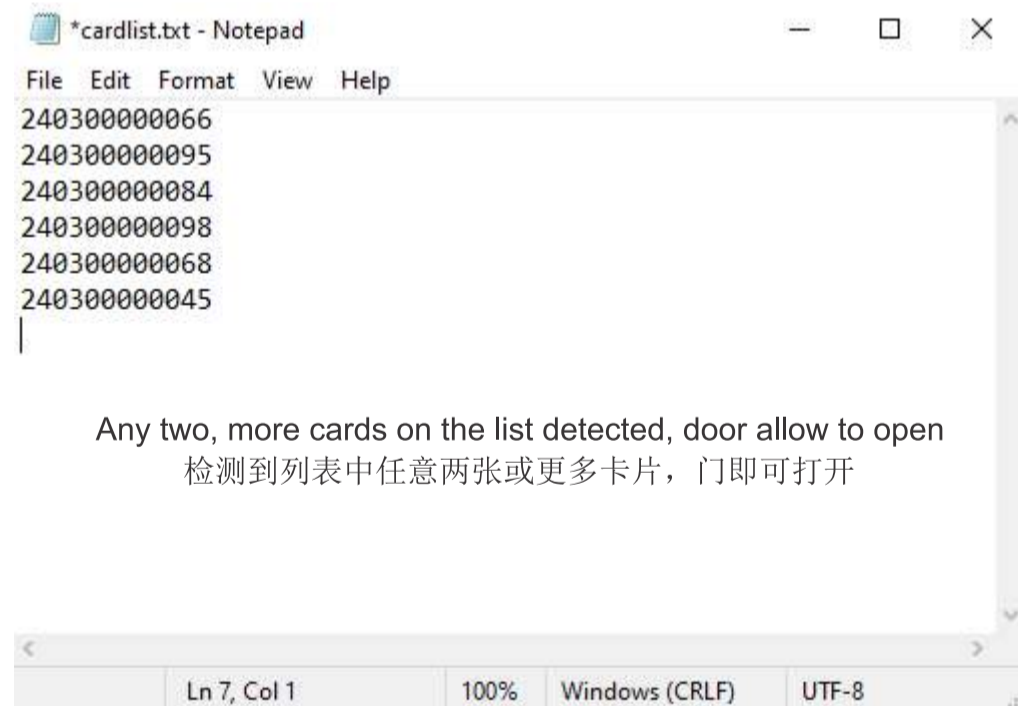
Any one of card on the list detected, door allow to open
检测到列表中的任意一张卡，门即可打开



Two or more operation officer on site &
wear Bluetooth card
现场至少有两名运营人员，
并佩戴蓝牙卡

Advance Security Level

高级安全级别



Any two, more cards on the list detected, door allow to open
检测到列表中任意两张或更多卡片，门即可打开

Every server rack have own security setting

Most case are in standard level

Some special rack is in advance level

每个服务器机架都有自己的安全设置

大多数情况下为标准级别

部分特殊机架的安全级别为高级别

